



MIAMI MAGAZINE MODERN LUXURY

Date: Saturday, October 01, 2016
Location: MIAMI, FL
Circulation (DMA): 57,528 (N/A)
Type (Frequency): Magazine (10Y)
Page: 146
Section: Main
Keyword: Enzo Enea



1 EMBRACE TOMORROW

At Baptist Health South Florida, we're committed to helping women and men live longer, healthier lives. During the month of October, we're offering special pricing for patients without insurance: screening mammogram-\$50/diagnostic mammogram-\$100. Visit BaptistHealth.net/BreastHealth to schedule an appointment. A prescription is required. If you don't have a referring physician, call **786.475.6499**, and we'll connect you with one.

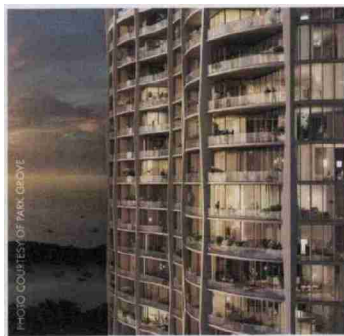
MODERN LUXURY

TOP 5 LIVE THE GOOD LIFE

THE HOTTEST PRODUCTS, EXCLUSIVE EVENTS AND SPECIAL OPPORTUNITIES FROM OUR ADVERTISING PARTNERS.

4 OUTDOOR LUXURY

Since 1945, Brown Jordan has remained true to the legacy of its founders Robert Brown and Hubert Jordan by offering the best-in-class products for luxurious outdoor living. We continue to deliver luxury products that remain the gold standard in outdoor furnishings. **Miami Design District, 3625 NE 2nd Ave., brownjordan.com, 305.573.1946**

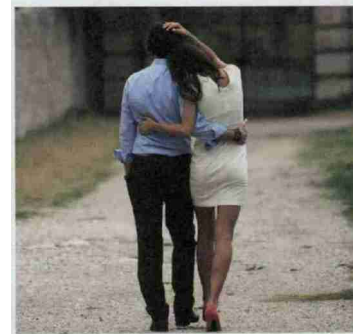
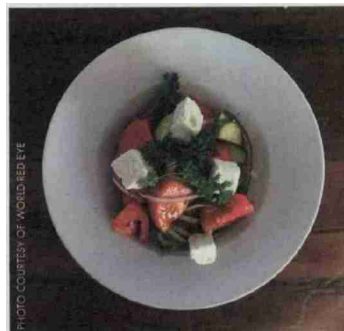


2 PARK GROVE

Designed by OMA/Rem Koolhaas, Park Grove is a 5.2 acre, three-towered luxury development going vertical in Miami's historic Coconut Grove community. The property boasts interiors by Meyer Davis, kitchens and baths by William Sofield, landscapes by Enzo Enea and amenities that rival those of a luxury resort. Terra and The Related Group are the forces behind this magnificent development, which is slated to be complete in 2018. park-grove.com/#/landing

3 KIKI ON THE RIVER

Romantic and contemporary, Kiki on the River evokes the hospitality and spirit of the Greek islands with the service and style of a romantic island garden restaurant & lounge. Private gondola service and a kitchen helmed by Mitos vet Chef Rhee set this river spot apart. Dishes reflect the bounty of seafood that comes from the Mediterranean as well as an array of meats prepared simply on the grill. kikontheriver.com



5 IT'S TIME TO FALL IN LOVE!

Allow Selective Search, North America's leading boutique matchmaking firm, to find the love of your life. Founded in 2000 by former Executive Recruiter Barbie Adler, Selective Search's proven Meet Your Future® process combines executive recruiting methodologies with traditional matchmaking intuition. From cultural events and galas, to restaurants and vacation spots, Selective Search knows exactly where to find the smart, quality singles their clients are looking for. Learn more at selectivesearch.com.